

1-083SL Quarter-Turn Pr32x20 L18 SNAP-LINE

Tool-less installation, Tool or hand operable, IP65



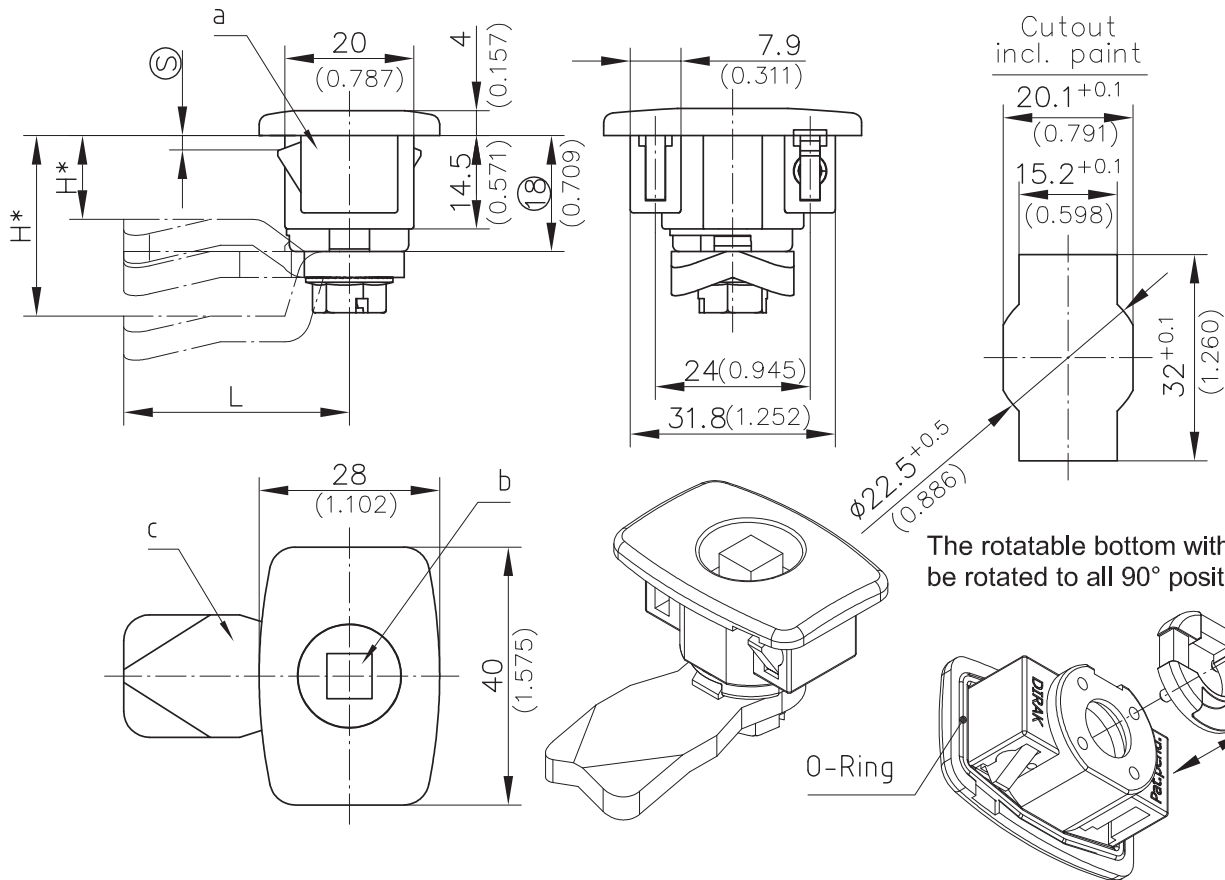
Product Notes:

- Pre-assembled Quarter-Turn can be installed in cutout
- Vibration resistant
- Blind installation
- Low profile
- RH and LH application
- Components can be pre-assembled by DIRAK upon request
- Cutout 32x20.1mm
- Screw-on installation - see Product System 1-100 and 1-100.01
- Other tool-less installation - see Product System 1-082SL
- Stainless steel - see Product System 7-080 and 7-080.01

- Water and dust tight according to IP65, DIN EN 60529 by O-rings (are included)
- Grounding achieved with grounding clip
- **NOTE: H-dimension of the cam must be greater than 12mm (0.472)**

Material:

- **Housing:** PA, Black or Zinc Die, Chrome Plated
- **Wings:** Sintered Steel
- **O-Ring:** NBR, black



	Clamping Range [Ⓢ]	PA, Black	Zinc Die, Chrome Plated	See Page
a) Housing	1.0 - 1.7	406-9005.00-00013	406-9006.00-00013	
	1.3 - 2.0	406-9005.00-00016	406-9006.00-00016	
	1.5 - 2.2	406-9005.00-00018	406-9006.00-00018	
	1.8 - 2.5	406-9005.00-00021	406-9006.00-00021	
	2.3 - 3.0	406-9005.00-00026	406-9006.00-00026	
	2.8 - 3.5	406-9005.00-00031	406-9006.00-00031	

Other [Ⓢ] - dimension on request

b) Inserts				01.42, 01.98, 01.99, 01.24
c) Cams				01.42, 01.101, 01.102
c1) 3-point cams				01.101
d) Grounding clip (not shown)		200-1101.04-00000	200-1101.04-00000	
e) Please contact DIRAK for Part No. of a completely pre-assembled SNAP-LINE Quarter-Turn.				